



FUTURA PRO



Futura Pro is the only electronic key cutting machine able to duplicate all types of residential and automotive keys (flat, cruciform, laser and dimple keys).



* Keys cut with specific optional accessories.

FUTURA PRO



Main features

- Exclusive double cutting station.
- Practical and easy to operate.
- Immediate process control.
- Faster cutting cycles.
- Improved connectivity with 2 USB ports.
- Space-saving and portable solution.
- Functional and stylish.
- New software functions, including: shortcut for vehicle key cutting code searches, key cut preview, guided updating procedure.

CE Futura Pro has been designed and manufactured in conformity with CE mark European standards.

FUTURA PRO

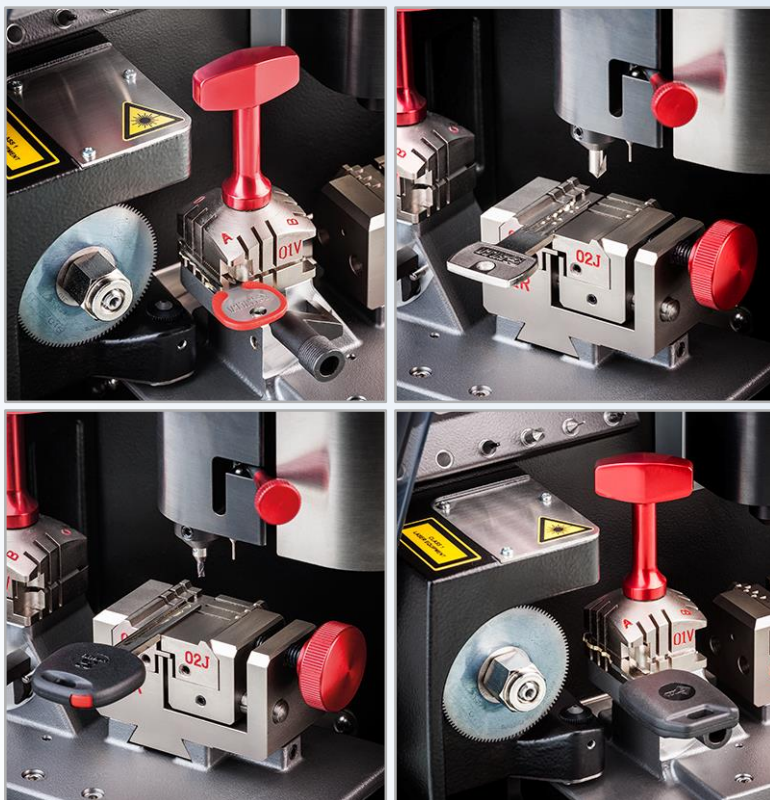


Two cutting stations in one user-friendly device

- **Ideal for inexperienced key cutters** thanks to the software-guided procedures, this lightweight and compact machine is also **perfect for professional locksmiths offering a roadside service.**
- Now even faster than before, Futura Pro stands out for the quality of its key cuts, its small footprint and its access to the widest key database available on the market via the integrated tablet.



FUTURA PRO



Exclusive double cutting station

- Futura Pro is unique in having two cutting stations so flat, cruciform, laser and dimple keys, **both residential and automotive, can all be cut using a single machine.**
- The wide range of optional accessories available further increases the machine's cutting capabilities allowing you to duplicate almost any residential and vehicle key on the market.

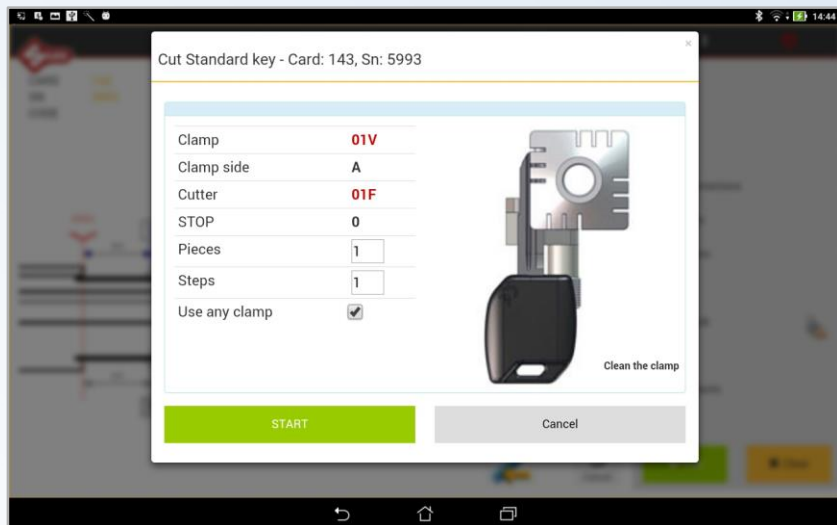
FUTURA PRO



Flat and cruciform key cutting station (Copy by code and by original)

- Decoding via optical reader.
- Copy by original function.
- Resistant-to-wear prismatic cutter.
- Guided calibration of the cutting station.
- Four-sided clamp with fast rotating solution.
- New, ergonomic clamp handle to easily tighten the key securely in place.
- All automotive keys and most residential keys cut in one cycle.

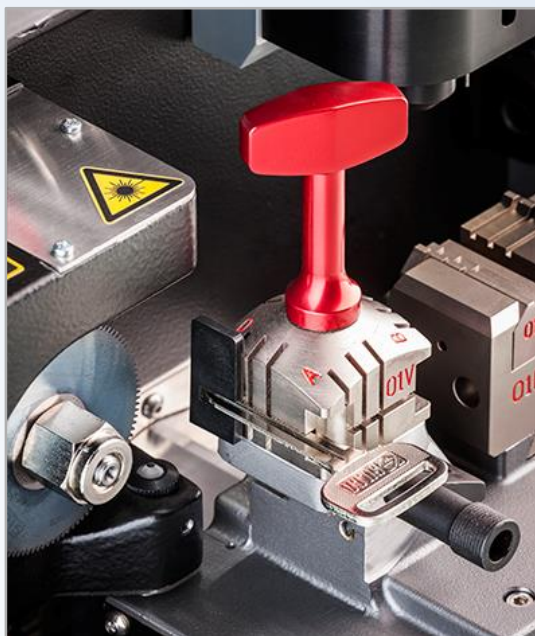
FUTURA PRO



‘Use any clamp’ function

- This function is particularly helpful when **cutting flat vehicle keys** (both symmetrical and asymmetrical).
- You can **copy the vehicle key by original or by card using any side of the flat key clamp**, including C and D sides, where you can easily block the key on the notches.
- This way you can avoid the situation where the removal of material from the key while cutting the first side hinders the correct positioning, and thus the correct cutting, of the second side of the key.

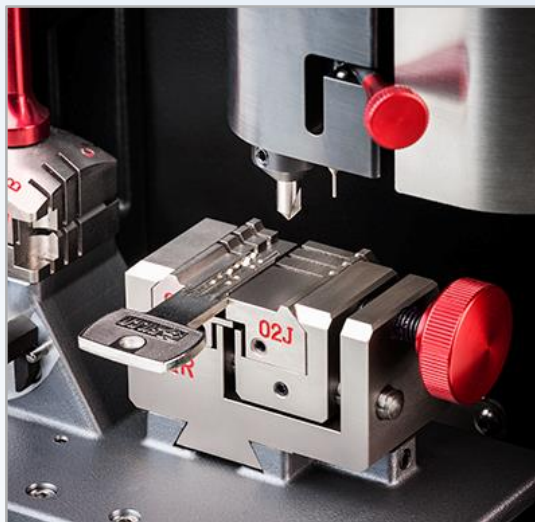
FUTURA PRO



New accessory: tip stop 4

- The new tip stop has been developed specifically for Futura Pro and enables you to **easily block keys flush with the fourth (and last) stop of the flat key clamp.**
- Fix the tip stop in the clamp, insert the key until it hits the tip stop and rotate the handle to secure the clamp. Remove the tip stop before cutting.

FUTURA PRO



Laser and dimple key cutting station

- Decoding by electric contact.
- Pull-out tracer point.
- Clamp with easy-change, interchangeable jaws means more cost-effective use of accessories and speedier installation.
- Existing Futura jaws are fully compatible with the new Futura Pro clamp whilst the easy-change jaws are also compatible with the Silca Triax Pro.
- Automatic calibration of the decoder and the cutting station.

FUTURA PRO



Practical and easy to operate

- Futura Pro is **controlled by a removable, 10" touch-screen tablet**, which guides the user step-by-step in all key cutting operations (for example in selecting the correct key profile of a cylinder key, the make, model and year for vehicle keys, in the choice of the right cutter, clamp, etc.).
- **The tablet integrates Silca Software's main functions and data**, including an extensive range of data cards and code tables for flat, cruciform, laser and dimple keys.
- The tablet stand attaches to the top of the machine and can be tilted. The tablet stand can also be placed on a bench or table next to the machine.

FUTURA PRO



Faster cutting cycles

- Futura Pro features **faster cutting cycles thanks to a motor that delivers up to three times more power** and cutters that reach speeds of 1585 rpm for flat keys and 12100 rpm for laser and dimple keys.
- A new tablet together with upgraded electronics deliver both faster response times and **an all-round improvement in the machine performance.**

FUTURA PRO



Immediate process control

- The colour-changing LED lights help the key cutter to immediately see the process status:
 - white: the machine is ready to proceed;
 - yellow: the machine is cutting a key;
 - green: the key cutting is complete;
 - red: there is a fault, for example the protective guard is accidentally left open.
- The lights switch off once the key is removed from the clamp and the guard is closed.

FUTURA PRO



Improved hardware and connectivity with 2 USB ports

- **All exposed screws are made of stainless steel** for better resistance to wear and a longer life.
- **The machine is equipped with 2 USB ports at the rear:** one for the tablet battery charger and one for the tethering connection so the Futura Pro and tablet remain connected and operational even when the Wi-Fi connection is lost or unstable.
- The second USB port can also be used to connect the USB flash drive supplied with Futura Pro to import code tables or machine software updates.

FUTURA PRO



Space-saving, portable and stylish

- **Futura Pro is compact, lightweight and easy to carry.** Featuring a safety shield that slides within the machine body and an ergonomic grip, it is perfect for small shops and vans.
- Silca prides itself not only on the outstanding quality of its products but also on their unique design. **Futura Pro's "total black" new look is both distinctive and stylish.**
- Revamped details include the new tool holder mat on the top of the machine and the protective motor cover made of polished steel.

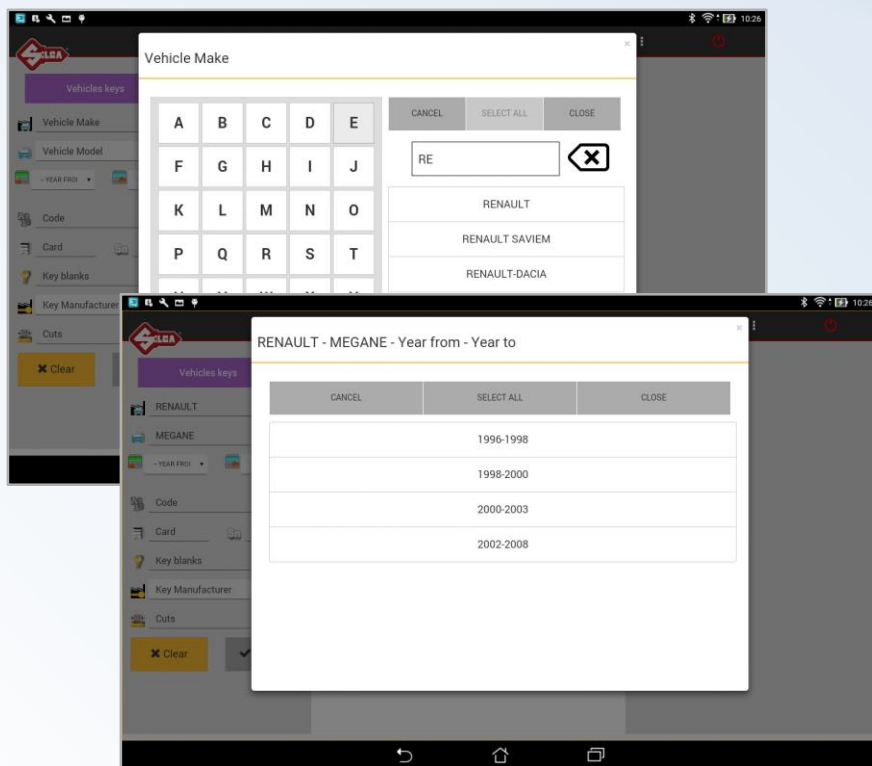
FUTURA PRO



Safety system

- The working area is completely protected by a **safety guard that closes back into the machine body.**
- A **microswitch stops the cutter working if the guard is accidentally opened** and the LED light turns red until the guard is closed again.

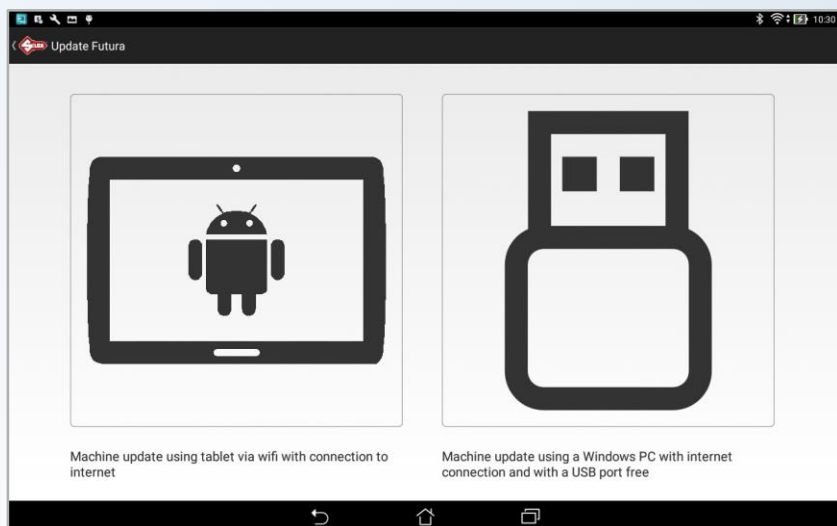
FUTURA PRO



Shortcut function for vehicle key cutting code searches

- Searching for the right vehicle key cutting code is now easier and quicker with the card search shortcut function.
- **Just input the first letters and the software will prompt the make and model you're looking for, so you don't have to manually enter the entire field.**

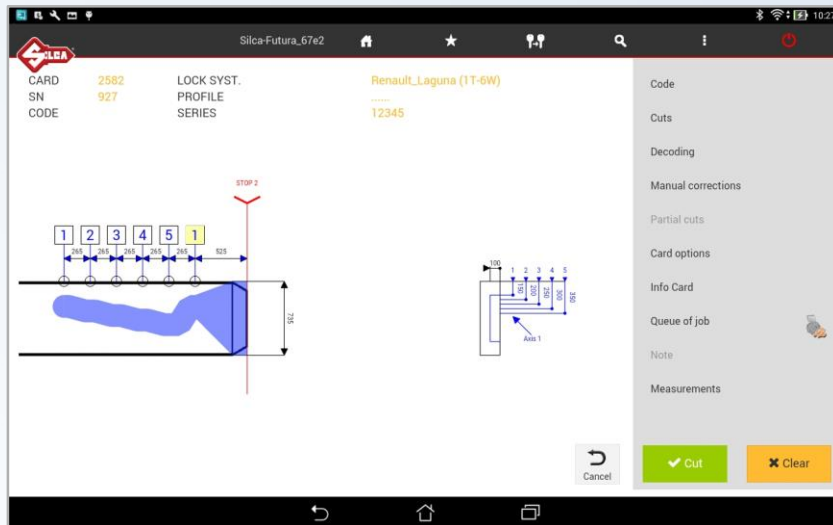
FUTURA PRO



Guided updating procedure

- Keeping abreast of Futura Pro's continuous upgrades has become easier with the new guided updating procedure.
- **The software leads the user step-by-step through all the operations required for updating the machine** (both via Wi-Fi and via web with Silca Remote Service).

FUTURA PRO



Key cut preview

- The preview allows the key cutter to **check and correct the cut for a worn key.**
- This function is now available also for laser keys.

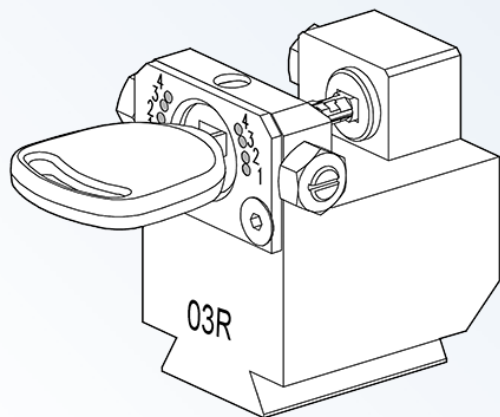
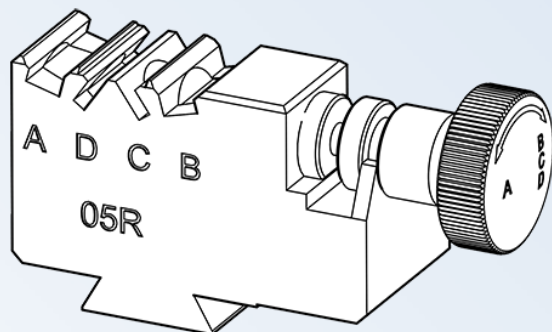
Faster switch on

- The machine turns on quickly thanks to the new upgraded electronics.

FUTURA PRO



05R clamp
for Kaba® ExperT
type keys



03R clamp
for Ford® (Valeo® and
Tibbe®) type keys

Optional accessories

- A number of optional clamps, jaws, cutters and adapters allow for cutting a wide range of special keys, including: Abus®, Assa®, CES®, Cisa®, Dom®, Iseo®, Kaba®, Keso®, Mul.T.Lock®, Pfaffenhain®, Securemme®, Winkhaus®, BMW®, Citroën®, Ford®, Huf® and Mercedes® type keys, and tubular keys.
- For the full list **check the “Futura Pro - Optional accessories guide”** available online on our websites.

FUTURA PRO



Available models



D847000ZB
Futura Pro



D847010ZB
Futura Pro Japan
(with 01VJ clamp for Miwa® keys)



D847600ZB
Futura Pro without tablet
(with tablet support)

FUTURA PRO



Technical Data

Power supply	Machine: 24V d.c.- 2,2 Amp. - 55W Power pack: 90/264V a.c. - 50/60Hz - 220W MEANWELL GS220A24-R7B
Cutters motors	24V d.c.
Cutters	Prismatic cutter (flat cuts): 01F, in HSS super rapid steel, coated Cutter (dimple cuts): 01D, in HSS super rapid steel Cutter (laser cuts): 01LW, in carbide, coated
Tool speed	Prismatic cutter: 1585 rpm Cutter (dimple/laser cuts): 12100 rpm
Clamps	Clamp (flat cuts): 01V, removable, with 4 universal sides for holding flat, vehicle and cruciform keys Clamp (dimple/laser cuts): 01R, removable and provided with interchangeable jaws (01J and 02J)
Movements	on 3 axes (with special bushes) driven by step motors (on rectified roller guides)
Runs	X axis: 30 mm, Y axis: 50 mm, Z axis: 27 mm
Dimensions	width: 318 mm, depth: 413 mm, height with tablet and stand: 522 mm (340 mm without tablet and stand)
Weight	20 Kg

FUTURA PRO



www.silca.biz

© Copyright by Silca S.p.A. 2016 All Rights Reserved

In compliance with current regulations relating to industrial property, we hereby state that the trade-marks or trade names mentioned in this document are the exclusive property of authorized manufacturers of locks and users. Said trade-marks or trade names are nominated only for the purposes of information so that any lock for which our keys are made can be rapidly identified. This document is reserved exclusively for professional key cutters who use Silca products. / All information and illustrations in this document are for guidance only. Silca reserves the right to alter products designs, dimensions or info to improve the products quality. The contents of this document are fully protected by Copyright and may not be copied or reproduced in any form, without written permission from Silca S.p.A. Any controversy shall be settled by the Courts of Justice where the company has its headquarters, with express exclusion of any other court.